

# *PK Manual*

MIRA<sup>®</sup> BELLA

ITEM	PAGE
PRIME FOR FACE	3
SKIN TINT CREAM-TO-POWDER	4
SKIN TINT CRÈME	5
CC CRÈME	6
PERFECTING CONCEALER	7
PURE PRESS	8
PERFECTING POWDER	9
BRONZED	10
BRILLIANT	11
CHEEKY BLUSH	12
BLUSH COLOUR DUOS	13
EYESHADOW QUADS	14
THE BROW PENCIL	15
THE BROW SHAPER	16
EYE DEFINER	17
MAGIC MARKER EYELINER	18
LASH DEFINITION PRIMER	19
LASH ESSENTIAL MASCARA	20
LASH LUXE	21
SIMPLY REMOVE	22
VELVET LIP PENCIL	23
COLOUR VINYL LIPSTICK	24
COLOUR LUXE	25
LIP DEFINER	26
PERFECTING LIP DEFINER	27
SIGNATURE BRUSH COLLECTION	28

PRIME FOR FACE



PRIME FOR FACE

weightless, oil-free formula glides on to help promote long-wearing makeup. Vitamin E works as an antioxidant to smooth out lines as it moisturizes and protects skin.

SKIN TYPES

Ideal for most skin types.

APPLICATION

For use on entire face, apply a small amount. Lightly pat into skin. For spot treatment use less. Use prior to any liquid, cream or powder foundation.

\*Remember – use a small amount of product

PRO TIPS

Perfect on mature skin as a “filling” agent for lines.

KEY INGREDIENTS

Vitamin E – Antioxidant

CLAIMS

Paraben-free, Fragrance-free, FD&C/D&C Dye-free, Gluten-free, Oil-free, Lead-free

INGREDIENTS

Cyclopentasiloxane, Dimethicone Crosspolymer, Dimethicone/Vinyl Dimethicone Crosspolymer, Phenoxyethanol, Dimethiconol, Ethylene Brassylate, Silica, Tocopheryl (Vitamin E) Acetate

# SKIN TINT CREAM-TO-POWDER FOUNDATION



## SKIN TINT CREAM-TO-POWDER

foundation transforms skin with the easy application of a cream and the matte finish of a powder. This super lightweight formula neutralizes imperfections and redness without adding coverage. One swipe is all you need. Flexible formula does not break down or gather around dry, oily, or scabbed areas of the face. Available in 6 shades aligned to the Fitzpatrick system.

USE WITH  
FACE BLENDER BRUSH



### SKIN TYPES

Ideal for dry, oily, mature, acne-prone or irritated skin types.

### APPLICATION

Apply with a sponge or Face Blender Brush for light coverage. Coverage is not buildable no matter how many layers are applied. Do not overuse the product in an attempt to build coverage.

### PRO TIPS

Prime for Face is not needed before application as Cream-to-Powder is silicone-based and already provides slip. For additional coverage, dust Pure Press over the top rather than adding layers. This will set the foundation to wear longer.

### KEY INGREDIENTS

**Hydrating:** Hydrogenated Polyisobutene, Isononyl Isononanoate, Dimethicone, Phenyl Trimethicone, Alkyl Methicone  
**Transforming:** Polysilicone-11, Laureth-12  
**Flexible:** Nylon-12, Polymethyl Methacrylate  
**Light Diffusing:** Polymethylsilsesquioxane, HDI/Trimethylol Hexyllactone Crosspolymer

### CLAIMS

Talc-free, Alcohol-free, Paraben-free, Fragrance-free, Gluten-free, D4 & D5 free

### INGREDIENTS

Myristyl Trisiloxane, Dicalcium Phosphate, Dimethicone, Isononyl Isononanoate, Trimethylsiloxyphenyl Dimethicone, Hydrogenated Polyisobutene, Polysilicone-11, Polyethylene, Hydrogenated Castor Oil, Silica, Nylon-12, Polymethyl Methacrylate, HDI/Trimethylol Hexyllactone Crosspolymer, Polymethylsilsesquioxane, Distearidimonium Hectorite, Propylene Carbonate, Pentaerythrityl Tetra-Di-T-Butyl Hydroxyhydrocinna-mate, Laureth-12. MAY CONTAIN: Mica, Iron Oxides (CI 77491, CI 77492, CI77499), Titanium Dioxide (CI 77891), Ultramarines (CI 77007), Carmine (CI 75470), Ferric Ferrocyanide (CI 77510), Ferric Ammonium Ferrocyanide (CI 77510), Chromium Oxide Greens (CI 77288), Chromium Hydroxide Green (CI 77289), Blue 1 Lake (CI 42090), Yellow 5 Lake (CI 19140)

# SKIN TINT CRÈME FOUNDATION



Your skin,  
*perfected!*

## SKIN TINT CRÈME

medium-coverage foundation delivers moisture and hydration. Good for sensitive skin, mature women dealing with hormonal changes and healing over-exfoliated skin. Anti-inflammatory and reduces redness. Ideal for clients struggling with Acne and Rosacea.

Minimizes fine lines and wrinkles while providing a light, natural finish. Showcases the true beauty of the skin.

Available in 14 shades aligned with the Fitzpatrick system for superior shade selection.

USE WITH  
FOUNDATION BRUSH



### SKIN TYPES

Ideal for normal and dry skin

### APPLICATION

Apply product with a sponge, Foundation Brush or Face Blender Brush for even coverage.

### PRO TIPS

Apply Perfecting Concealer after the application of Skin Tint Crème. Set with Perfecting Powder for the most natural finish. Layer with Pure Press for a full coverage foundation.

### KEY INGREDIENTS

**Hydrating:** Glycerin, Butylene Glycol, Hydrolyzed Vegetable Protein, Beeswax, Trehalose  
**Anti-inflammatory:** Allantoin  
**Antiaging:** Sodium Hylauronate  
**Natural Finish:** Beeswax, C18-21 Alkane, Polyisobutene, VP/Eicosence Copolymer, Mineral Treated Pigments  
**Light-diffusing:** Boron Nitride, Polymethylsilsesquioxane

### CLAIMS

Paraben-free, Talc-free, FD&C Dye-free, Oil-free, Lead-free, Fragrance-free, Gluten-free.

### INGREDIENTS

Water (Aqua), Cyclopentasiloxane, Ethylhexyl Methoxycinnamate, Ethylhexyl Salicylate, Cetyl PEG/PPG-10/1 Dimethicone, Cyclohexasiloxane, Butylene Glycol, Benzophenone-3, Ozokerite, VP/Eicosene Copolymer, Distearidimonium Hectorite, Polyglyceryl-4 Isostearate, Magnesium Sulfate, Hexyl Laurate, Bis-Vinyl Dimethicone/Dimethicone Copolymer, Phenoxyethanol, Acrylates/Polytrimethylsiloxymethacrylate Copolymer, Beeswax (Cera Alba), Hydroxyethyl Acrylate/Sodium Acryloyldimethyl Taurate Copolymer, Glycereth-18 Ethylhexanoate, C18-21 Alkane, Polyisobutene, Potassium Sorbate, Silica, Boron Nitride, Polymethylsilsesquioxane, Isohexadecane, C12-15 Alkyl Benzoate, Xanthan Gum, Caprylyl Glycol, 1,2-Hexanediol, Glycereth-18, C30-45 Alkyl Cetearyl Dimethicone Crosspolymer, Isododecane, Triethoxycaprylylsilane, Aluminum Dimyristate, Dipropylene Glycol Dibenzoate, Hydrolyzed Vegetable Protein, Propylene Carbonate, Allantoin, Disodium Stearoyl Glutamate, Polysorbate 60, Trehalose, Glycerin, PPG-15 Stearyl Ether Benzoate, Tropolone, Sodium Benzoate, Sodium Hyaluronate, Titanium Dioxide (CI 77891), Iron Oxides (CI 77491, CI 77492, CI 77499), Mica (CI 77019)

CC CRÈME



PERFECTING CONCEALER



**CC CRÈME** transformative makeup in 10 seconds! Hydrating and soothing CC Crème formulated with skin-loving ingredients provides 6 benefits to the skin. This full coverage, all-in-one product soothes, moisturizes, protects, prevents, controls oil, and evens out imperfections.

**SPF 20** Broad Spectrum UVA/UVB protection. Non-comedogenic.

Available in 4 shades:  
Fair (Fitz I), Light (Fitz II),  
Medium (Fitz III), Dark (Fitz IV)

**FAIR (FITZ I) AVAILABLE JANUARY 2015**

SKIN TYPES

Ideal for normal, normal combination and oily skin.

CLAIMS

Paraben-free, FD&C/D&C Dye-free, Gluten-free

KEY INGREDIENTS

**Hydration:** Bamboo Water, Glacial Water, Argan Oil  
**Skin Smoothing:** Bamboo Water, Glacial Water, Apple Water, Lily  
**Antioxidant:** Lily, Witch Hazel  
**Whitening/Brightening:** Rice Extract  
**Antiaging:** Rose Water, Assai Berry, Avocado Oil, Argan Oil  
**Cell Regeneration:** Rose Water  
**Texture Improvement:** Avocado Oil, Apple Water  
**Elasticity:** Phytosqualane  
**Sebum Control:** Melissa Officinalis Extract, Witch Hazel, Limetree Water  
**Tone Correction:** Monarda Didyma Extract  
**Skin Protection:** SPF 20

ACTIVE INGREDIENTS

**Octinoxate:** 5.00%, **Titanium Dioxide:** 10.06%, **Zinc Oxide:** 1.96%

INACTIVE INGREDIENTS

Water, Cyclopentasiloxane, Dicaprylyl Carbonate, Dipropylene Glycol, Butylene Glycol, Isopropyl Isostearate, PEG-10 Dimethicone, Caprylyl Methicone, Distearidimonium Hectorite, Magnesium Sulfate, Hydrogenated Polydecene, C12-14 Pareth-3, Polydecene, Aminopropyl Dimethicone, Phenoxyethanol, Polymethylsilsesquioxane, Palmitic Acid, Trihydroxystearin, Alumina, Argania Spinosa Kernel Oil, Ethylhexylglycerin, Euterpe Oleracea Fruit Extract, Fragrance (Parfum), Gelatin, Hamamelis Virginiana (Witch Hazel) Flower Water, Melissa Officinalis Flower/Leaf/Stem Water, Monarda Didyma Leaf Extract, Oryza Sativa (Rice) Extract, Persea Gratissima (Avocado) Oil, Phyllostachis Bambusoides Juice, Squalane, Rosa Centifolia Flower Water, Tilia Vulgaris Flower Extract, Tocopheryl Acetate, Triethoxycaprylylsilane, Silica, Caviar Extract, Chrysanthemum Indicum Flower Extract, Lilium Candidum Flower Extract, Lavandula Angustifolia (Lavender) Extract, Ocimum Basilicum (Basil) Flower/Leaf Extract, Sodium Hyaluronate, Althaea Officinalis Leaf/Root Extract, Chamomilla Recutita (Matricaria) Flower Extract, Foeniculum Vulgare (Fennel) Fruit Extract, Houlttuynia Cordata Extract, Pyrus Malus (Apple) Fruit Water, Rosmarinus Officinalis (Rosemary) Leaf Extract, Salicylic Acid, Mica, Iron Oxides (CI 77491, CI 77492, CI 77499)

**PERFECTING CONCEALER** weightless, versatile creamy concealer diminishes imperfections and brightens skin appearance. Comfortable, long-wear formula soothes, nourishes and moisturizes skin while hiding fine lines. Can be used for sheer coverage or layered for more intensity. Available in 5 shades that align to the Fitzpatrick system.

**AVAILABLE AUGUST 2015**

**USE WITH**  
PERFECTING CONCEALER BRUSH



SKIN TYPES

Ideal for all skin types

APPLICATION

Apply to skin with custom flocked paddle. Blend immediately with stippling motion for sheer coverage. For more coverage, let set on skin before blending. The longer it sets, the more coverage it provides. Tap into skin around edges to blend with the Perfecting Concealer Brush or fingertips.

PRO TIPS

This formula is lightweight enough to be worn without foundation. It can also be used to contour and highlight the skin when applied over Skin Tint Crème foundation. Set with Perfecting Powder for the most soft-focus, picture-perfect finish.

KEY INGREDIENTS

**Skin Soothing and Antispot Action:** Alpha Bisabolol  
**Antioxidant:** Vitamin E  
**Conditioning:** Butyrospermum Parkii Butter (Shea Butter)

CLAIMS

Talc-free, Paraben-free, Gluten-free, FD&C/D&C Dye-free.

INGREDIENTS

Water (Aqua), Cyclopentasiloxane, Squalane, Trimethylsiloxypheyl Dimethicone, Cetyl PEG/PPG-10/1 Dimethicone, Mica, Glycerin, Distearidimonium Hectorite, Polyglyceryl-4 Isostearate, Glyceryl Ethylhexanoate/Stearate/Adipate, Benzimidazole Diamond Amidoethyl Urea Carbamoyl Propyl Polymethylsilsesquioxane, Trimethylsiloxysilicate, Sodium Chloride, Polysorbate 20, HDI/Trimethylol Hexyllactone Crosspolymer, Phenoxyethanol, Benzyl Alcohol, Sodium Dehydroacetate, Dimethicone, Tocopheryl Acetate, Polymethylsilsesquioxane, Butyrospermum Parkii Butter (Shea Butter), Bisabolol, Disodium EDTA, Caprylic/Capric Triglyceride, Triethoxycaprylylsilane, Silcia, Spilanthes Acmella Flower Extract MAY CONTAIN: Titanium Dioxide (CI 77891), Iron Oxides (CI 77491, CI 77492, CI 77499)



# PURE PRESS MINERAL POWDER



# PERFECTING POWDER



**PURE PRESS** triple-milled, mineral-based pressed powder foundation that can be layered from medium to full coverage.

Formula is light-diffusing and contains soft-focus, reflective ingredients that diminish the appearance of fine lines, scarring and sun damage.

Loaded with vitamins and minerals, this talc-free, alcohol-free and chemical-free powder is safe for even the most sensitive skin. Antioxidants included in the formula provide natural moisture and hydration. Not only is Pure Press long-wearing and water resistant, it also protects your skin from the sun. Certified organic ingredients lead to smoother, more supple skin.

Pure Press is available in 6 shades aligned to the Fitzpatrick Scale for women of all skin tones.

**SKIN TYPES**

All skin types: excellent as a foundation for sensitive skin types

**APPLICATION**

Swirl Kabuki Brush in compact, tap off excess, then buff onto skin using a circular motion.

**PRO TIPS**

For fuller coverage, use Kabuki Brush; for more translucent setting powder effect, use Powder Brush. For extra coverage on problem areas, stipple with the sponge found in the compact.

**KEY INGREDIENTS**

**Hydrating:** Vitamins A, Vitamin E, Jojoba Esters

**Antiaging:** Certified organic: Laminaria Ochroleuca Extract, Hyrolized Lola Implexa Extract

**Sun Protection:** Titanium Dioxide, Zinc Stearate

**Light-Diffusing:** Mica

**Natural Preservative:** Natacide

**CLAIMS**

Talc-free, Paraben-free, Oil-free, Chemical-free, FD&C/D&C Dye-free, Gluten-free, D4 & D5 free

**INGREDIENTS**

Mica, Nylon 12, Zinc Stearate, Boron Nitride, Dimethicone, Jojoba Esters, Tocopheryl Acetate, Retinyl Palmitate, Ascorbyl Palmitate, Laminaria Ochroleuca Extract, Caprylic/Capric Triglyceride, Hydrolized Lola Implexa Extracts, Fragrance. MAY CONTAIN: Titanium Dioxide (CI77891), Iron Oxides (CI77491, CI77492, CI 77499), Bismuth Oxychloride (CI77163)

**USE WITH  
KABUKI BRUSH**



**PERFECTING POWDER** translucent silica powder increases foundation wear while perfecting skin appearance. Applies smoothly to set makeup without adding any weight. Luminous finish is fabulous for high definition makeup trend. This formula features 90% natural ingredients. Available in one universal shade.

**SKIN TYPES**

Ideal for all skin types

**APPLICATION**

Set makeup by dusting skin with Perfecting Powder using the Mirabella Powder Brush. Perfecting Powder sets Perfecting Concealer while highlighting the under-eye area.

**KEY INGREDIENTS**

**Antioxidants:** Vitamins C & E

**Antiaging:** Caprooyl Tetrapeptide-3

**Oil Absorbing:** Silica

**Long-Wearing:** Dimethicone and Trimethylsiloxysilicate

**High Definition:** Polymethyl Methacrylate and Silica

**CLAIMS**

Talc-free, Paraben-free, D4 & D5 free, Gluten-free

**INGREDIENTS**

Mica, Silica, Polymethyl Methacrylate, Dimethicone, Ethylhexylglycerin, Phenoxyethanol, Trimethylsiloxysilicate, Glycerin, Sodium Dehydroacetate, Tocopheryl Acetate, Retinyl Palmitate, Ascorbic Acid, Dextran, Caprooyl Tetrapeptide-3, Bismuth Oxychloride (CI 77163)

**USE WITH  
POWDER BRUSH**



BRONZED



**BRONZED** mineral-based bronzing powder with primatech shimmer. Revolutionary color and texture combines all the best features of baked, fluid and cream products. Primatech creates the truest color imaginable with a highly polished finish. Bronzed kisses the skin with a touch of shimmering sun. Available in 3 shades: Tawny Warmth, Baked Sand, and Burnt Copper.

SKIN TYPES

Ideal for all skin types and tones

BENEFITS

Mineral components create a natural radiance without being harsh on the skin. Pure pigments combine for unbelievable true color and a smooth, polished finish. Transparency allows layering with being powdery or heavy in application. Applies with an instant even color release.

APPLICATION

Apply with Blush Contour Brush or Powder Brush for sheer to medium buildable coverage. Layer application with Blush Colour Duo or Brilliant highlighting powder for a complete look.

PRO TIPS

Can be used on eyes and cheeks. Layering with several shades creates dimension and second skin sculpting. Use Bronzed powders to softly sculpt the face or to create an all over veil of golden light. For total bronzing, use the Powder Brush to apply bronzer in fluid motions all over face after foundation. Then apply a darker shade just under cheekbones, along temples and down the bridge of the nose using the Blush Contour Brush to bring out facial structure. Finally, using the Face Blender Brush, dust cheekbones, and eyelids with the lightest shade to highlight skin and deliver a stunning, gilded effect. Follow with a sheer application of Blush Duo in Radiant to add a subtle pop of color to the apples of cheeks.

CLAIMS

Talc-free, Paraben-free, D4 & D5 free, Gluten-free

INGREDIENTS

Synthetic Fluorphlogopite, Mica, HDI/Trimethylol Hexyllactone Crosspolymer, Cetearyl Ethylhexanoate, Glycerin, Squalane, Octyldodecyl Stearoyl Stearate, Caprylyl Glycol, Ethylhexylglycerin, Polysorbate 80, 1,2-Hexanediol, PTFE, Dimethicone, Silica, Zinc Stearate, Pentaerythrityl Tetra-DI-t-Butyl Hydroxyhydrocinnamate, Chondrus Crispus (Carrageenan), Xanthan Gum, Lauroyl Lysine, Dicalcium Phosphate. MAY CONTAIN: Titanium Dioxide (CI 77891), Iron Oxides (CI 77491, CI 77492, CI 77499), Ultramarines (CI 77007), Carmine (CI 75470), Manganese Violet (CI 77742), Ferric Ferrocyanide (CI 77510), Ferric Ammonium Ferrocyanide (CI 77510), Chromium Oxide Greens (CI 77288), Chromium Hydroxide Green (CI 77289), Red 6 (CI 15850), Red 7 (CI 15850), Red 7 Lake (CI 15850), Red 28 Lake (CI 45410), Red 30 Lake (CI 73360), Yellow 5 Lake (CI 19140), Yellow 6 Lake (CI 15985), Blue 1 Lake (CI 42090)

BRILLIANT



NEW!

**BRILLIANT** mineral-based highlighter with primatech shimmer. Brand new illuminator revitalizes skin with subtle sheen. Beautifully blended color combinations provide a soft, incredibly flattering glow. Primatech is a color and texture revolution and combines all the best features of baked, fluid and cream products. Creates the truest color imaginable with a highly polished finish. Available in 4 shades: Shimmer Rose, Latte Swirl, Glowing Coral, Swirling Pearl.

SKIN TYPES

Ideal for all skin types

BENEFITS

Mineral components create a natural radiance without being harsh on the skin. Pure pigments combine for unbelievable true color and a smooth, polished finish. Transparency allows layering with being powdery or heavy in application. Applies with an instant even color release.

APPLICATION

Apply with Blush Contour Brush or Face Blender Brush for sheer to medium buildable coverage. Create structure on the face by combining with Bronzed powders for a complete look.

PRO TIPS

Can be used on eyes and cheeks. Layering with several shades creates dimension and second skin sculpting.

CLAIMS

Talc-free, Paraben-free, D4 & D5 free, Gluten-free

INGREDIENTS

Synthetic Fluorphlogopite, Mica, HDI/Trimethylol Hexyllactone Crosspolymer, Cetearyl Ethylhexanoate, Glycerin, Squalane, Dicalcium Phosphate, Calcium Aluminum Borosilicate, Octyldodecyl Stearoyl Stearate, Silica, Caprylyl Glycol, Ethylhexylglycerin, Polysorbate 80, Aluminum Calcium Sodium Silicate, 1,2-Hexanediol, PTFE, Dimethicone, Pentaerythrityl Tetra-DI-t-Butyl Hydroxyhydrocinnamate, Chondrus Crispus (Carrageenan), Xanthan Gum, Lauroyl Lysine, Tin Oxide. MAY CONTAIN: Titanium Dioxide (CI 77891), Iron Oxides (CI 77491, CI 77492, CI 77499), Ultramarines (CI 77007), Carmine (CI 75470), Manganese Violet (CI 77742), Ferric Ferrocyanide (CI 77510), Ferric Ammonium Ferrocyanide (CI 77510), Chromium Oxide Greens (CI 77288), Chromium Hydroxide Green (CI 77289), Red 6 (CI 15850), Red 7 (CI 15850), Red 7 Lake (CI 15850), Red 28 Lake (CI 45410), Red 30 Lake (CI 73360), Yellow 5 Lake (CI 19140), Yellow 6 Lake (CI 15985), Blue 1 Lake (CI 42090)



CHEEKY BLUSH

1 minute radiance boost



AS SEEN IN  
COSMOPOLITAN



**CHEEKY BLUSH** revolutionary glide-on primatech powder technology combines the best features of baked, liquid and cream formulas to give a second-skin appearance. This velvety blend of light perfecting ingredients provides instant color release with a weightless no-powder finish. Matte finish perfects to instantly sculpt and smooth skin for radiant buildable color. On-the-go pod application makes for easy touch-ups throughout the day.

SKIN TYPES

Ideal for all skin types and tones

KEY INGREDIENTS

**Velvet Texture and Transparency:** Marshmallow Slurry Technology  
**Colour Purity and Luminous Finish:** Absence of talc  
**Glide-on Creaminess:** Dimethicone coated Mica

CLAIMS

Talc-free, Paraben-free, Fragrance-free, D5-Free, Gluten-free

CLASSY INGREDIENTS

Mica, Cetearyl Ethylhexanoate, Dimethicone, Glycerin, Nylon-12, Zinc Stearate, Squalane, Octyldodecyl Stearoyl Stearate, Caprylyl Glycol, Ethylhexylglycerin, Polysorbate 20, 1,2-Hexanediol, Chondrus Crispus (Carrageenan), Xanthan Gum, Pentaerythrityl Tetra-Di-t-Butyl Hydroxyhydrocinnamate, HDI/Trimethylol Hexyllactone Crosspolymer, Silica, Titanium Dioxide (CI 77891), Red 7 Lake (CI 15850), Iron Oxides (CI 77492)

GIRLY INGREDIENTS

Synthetic Fluorphlogopite, Mica, HDI/Trimethylol Hexyllactone Crosspolymer, Cetearyl Ethylhexanoate, Glycerin, Dicalcium Phosphate, Squalane, Octyldodecyl Stearoyl Stearate, Caprylyl Glycol, Ethylhexylglycerin, Polysorbate 20, 1,2-Hexanediol, PTFE, Dimethicone, Silica, Chondrus Crispus (Carrageenan), Xanthan Gum, Pentaerythrityl Tetra-DI-t-Butylhydroxyhydrocinnamate, Zinc Stearate, Lauroyl Lysine, Manganese Violet (CI 77742), Titanium Dioxide (CI 77891), Red 7 Lake (CI 15850)

LIVELY INGREDIENTS

Mica, Cetearyl Ethylhexanoate, Dimethicone, Nylon-12, Zinc Stearate, Squalane, Octyldodecyl Stearoyl Stearate, Glycerin, Polysorbate 20, Caprylyl Glycol, Ethylhexylglycerin, 1,2-Hexanediol, Pentaerythrityl Tetra-Di-t-Butyl Hydroxyhydrocinnamate, Chondrus Crispus Extract, Xanthan Gum, HDI/Trimethylol Hexyllactone Crosspolymer, Silica, Titanium Dioxide (CI 77891), Iron Oxides (CI 77491, CI 77492), Red 30 Lake (CI 73360)

BLUSH COLOUR DUOS



Rediscover color with **BLUSH COLOUR DUOS**, perfectly-paired shades that create a radiant, healthy glow. This mineral formula has a soft, smooth texture that delivers pure color evenly while preventing moisture loss and restoring skin suppleness. Blush Colour Duos deliver excellent adherence and provide lasting color throughout the day. Matte shades awaken skin and accentuate its natural sheen. Available in four shades, designed for women of all colors.

SKIN TYPES

Ideal for all skin types and tones

APPLICATION

Layer application of both shades to create depth or add structure to the cheeks. A single shade can also be used. Experiment with mixing shades from different duos.

PRO TIPS

Use Pure Press to blend and soften color.

KEY INGREDIENTS

**Natural Finish:** Mica  
**Hydrating:** Phytosqualane  
**Energy:** Tourmaline, Malachite

CLAIMS

Talc-free, Paraben-free, Gluten-free, D4 & D5 free, Oil-free

INGREDIENTS

Mica, Kaolin, Squalane, Calcium Carbonate, Zinc Stearate, Silica, Magnesium Aluminum Silicate, Sorbitan Isostearate, Sorbitan Stearate, Lauroyl Lysine, Tourmaline, Potassium Sorbate, Malachite Extract. MAY CONTAIN: Titanium Dioxide (CI 77891), Iron Oxides (CI 77491, CI 77492, CI 77499), Manganese Violet (CI 77742), Ultramarines (CI 77007), Carmine (CI 75470), Bismuth Oxychloride (CI 77163), Ferric Ferrocyanide (CI 77510), Ferric Ammonium Ferrocyanide (CI 77510), Chromium Oxide Greens (CI 77288), Chromium Hydroxide Green (CI 77289), Red 6 (CI 15850), Red 7 (CI 15850), Red 7 Lake (CI 15850), Red 28 Lake (CI 45410), Red 30 Lake (CI 73360), Yellow 5 Lake (CI 19140), Yellow 6 Lake (CI 15985)

# EYESHADOW QUADS

# THE BROW PENCIL



**EYESHADOW QUADS** five expertly coordinated eyeshadow quads inspired by the street-style of the big city. Richly pigmented mineral formula is longwearing with a smooth application.

**SKIN TYPES**

Ideal for all skin types

**APPLICATION**

Apply desired shade(s) using the Flat Eyeshadow, Eyeshadow, Eye Blender, Small Crease or Detail Brushes.

**PRO TIPS**

Eyeshadows may be used wet or dry depending on the look. Use only one part of the shadow pan if you are going to use it with a wet applicator. To apply more color to the lid, a “stippling” method should be used with Flat Eyeshadow Brush. For soft and sheer wash of color use with the Eyeshadow Brush. Eye Colour shadows work well as eye liners using the Detail Brush. For a wide smudge look, use a sponge tip applicator.

**KEY INGREDIENTS**

**Light Reflective:** Mica

**Creamy Texture:** Nylon-12, Boron Nitride, Dimethicone

**Smooth Application:** Morgina Pterygosperma (Morgina) Seed Oil

**CLAIMS**

Talc-free, Paraben-free, Gluten-free, Fragrance-free, D4 & D5 free

**INGREDIENTS**

Mica, Zinc Stearate, Polyethylene, Nylon-12, Caprylic/Capric Triglyceride, Dimethicone, Magnesium Silicate, Boron Nitride, Lauroyl Lysine, Vinyl Dimethicone/Methicone, Silsesquioxane Crosspolymer, Moringa Pterygosperma (Morgina) Seed Oil, Silica, Caprylyl Glycol, Phenoxyethanol, Isopentylidol. MAY CONTAIN: Titanium Dioxide (CI 77891), Iron Oxides (CI 77492), Iron Oxides (CI 77491), Iron Oxides (CI 77499), Carmine (CI 75470), Manganese Violet (CI 77742), Ultramarines (CI 77007), Chromium Oxide Greens (CI 77288), Bismuth Oxychloride (CI 77163), Ferric Ferrocyanide (CI 77510), Blue 1 Lake (CI 42090:2), Yellow 5 lake (CI 19140:1), Tin Oxide (CI 77861), Aluminum Powder (CI 77000)

**THE BROW PENCIL** brows perfected. Sculpt and fill in brows naturally with fine point precision pencil that WON'T break off or chip. Pencil glides on for controlled lining with rich, blendable color. Smudgeproof and waterproof formula lasts all day long.

AVAILABLE SEPTEMBER 2015

**SKIN TYPES**

Ideal for all skin types

**APPLICATION**

Use feather-like strokes to mimic hair for a natural appearance concentrating application within the brow. For a more structured appearance, fill in the lines just above and below the brow as well to reinforce the overall arc and shape. Only use the pencil where needed. Do not roll pencil up too far as the slim lead needs support of the case. Comb through brows with wand once applied.

**PRO TIPS**

Brow shaping and defining enhances features and helps to balance the face. Modern brow styles call for full, customized to your face shape, confident brows. Full brows are glamorous and create a youthful look. Consider high arched brows for round-shaped faces, curved brows with low arch for heart-shaped faces, and curved brows with high arch for square-shaped faces.

**KEY INGREDIENTS**

**Antioxidants:** Vitamins C & E

**CLAIMS**

Talc-free, Paraben-free, FD&C/D&C Dye-free.

**INGREDIENTS**

Diisostearyl Malate, Triethylhexanoin, C20-40 Acid, C20-40 Alcohols, Polyethylene, Synthetic Wax, Glyceryl Behenate/Eicosadioate, Ethylene/Propylene Copolymer, Ethylcellulose, Boron Nitride, VP/Eicosene Copolymer, Tocopherol, Ascorbyl Palmitate MAY CONTAIN: Iron Oxides (CI 77491, CI 77492, CI 77499), Titanium Dioxide (CI 77891), Mica (77019)



# THE BROW SHAPER



**THE BROW SHAPER** take charge of your brows. This all-in-one product shapes, defines, grooms, fills gaps, and thickens brows! A simple sweep of the brush and your brows are perfected. It's a brow kit in a bottle. Powdery formula dries down flexible for a natural look. Long-wearing color lasts all day!

AVAILABLE SEPTEMBER 2015

**SKIN TYPES**

Ideal for all skin types.

**APPLICATION**

Comb and work through brows to shape and fill. Layer product in areas that need more fullness. Let dry once brows are in the desired shape.

**KEY INGREDIENTS**

**Hair Strengthening and Skin Smoothing:** Pathenol (Vitamin B5)

**Antioxidants:** Vitamin E

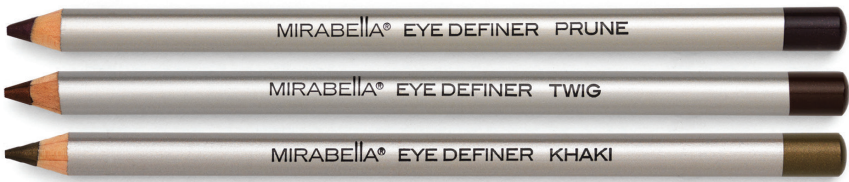
**CLAIMS**

Talc-free, Paraben-free, FD&C/D&C Dye-free, Gluten-free

**INGREDIENTS**

Water (Aqua), Pentylene Glycol, Glyceryl Stearate, Polypropylene, PEG-100 Stearate, Mica, Glycerin, Acrylates Copolymer, Polyamide-3, Polysorbate 20, Magnesium Aluminum Silicate, Ethylhexylglycerin, Polyacrylamide, Simethicone, Panthenol, C13-14 Isoparaffin, Tocopheryl Acetate, Phenoxyethanol, Laureth-7 MAY CONTAIN: Titanium Dioxide (CI 77891), Iron Oxides (CI 77491, CI 77492, CI 77499)

# EYE DEFINER



**EYE DEFINER** textured eye pencil defines the eye with rich color. Smooth enough to create smoky looks, yet firm enough for fine, precise lines. Available in six neutral shades.

**SKIN TYPES**

Ideal for all skin types

**APPLICATION**

Sharpen before use with Mirabella Sharpener. Apply from one corner to the other with a dot-to-dot motion. Smudge and soften with Mirabella Detail Brush.

**PRO TIPS**

Warm up the rounded off tip of the Eye Definer to make application smoother for a smudge effect. Eye Definer can be set with a face powder or Eye Colour to keep liner fresh and in place all day. To enhance lash line or fill in brows, use Detail Brush or Brow Brush to wipe across pencil tip and apply to lash line or brow area.

**KEY INGREDIENTS**

**Antioxidants:** Vitamin A and Vitamin E

**CLAIMS**

Paraben-free, D4 & D5 free, Gluten-free

**INGREDIENTS**

Triethylhexanoin, Ricinus Communis (Castor) Seed Oil (Richinus Communis), Beeswax (Cera Alba), Copernicia Cerifera (Carnauba) Wax (Copernicia Cerifera), Ozokerite, Dipentaerythrityl Tetrahydroxystearate/Tetraisostearate, Polymethyl Methacrylate, Lecithin, Tocopherol, Ascorbyl Palmitate, Citric Acid. MAY CONTAIN: Mica, Ultramarines (CI 77007), Aluminum Powder (CI 77000), Blue Lake 1 (CI 42090), Chromium Hydroxide Green (CI 77289), Chromium Oxide Greens (CI 77288), Titanium Dioxide (CI 77891), Maganese Violet (CI 77742), Yellow 5 Lake (CI 19140), Bismuth Oxychloride (CI 77163), Ferric Ferrocyanide (CI 77510), Red 40 Lake (CI 16035), Carmine (CI 75470), Iron Oxides (CI 77499, CI 77492, CI 77491).

# MAGIC MARKER EYELINER

AS SEEN IN  
**BAZAAR**



*Wing-tip liner made easy*

**MAGIC MARKER EYELINER** provides long-lasting, intense and luminous color. The versatile brush-tipped applicator is finely structured to create precise and controlled application. Ink flows freely for a smooth, continuous line and instant color release. High percentage of water makes this marker long-wearing. Inclusion of carbon black achieves deep black intensity. Eyeliner formula also contains Organic Chamomile (Matricaria) Flower Water to soothe and protect skin.

**SKIN TYPES**

Ideal for all skin types

**APPLICATION**

Use the tip of the marker to create a fine line and the side of the marker to create a wider line. If ink starts skipping in application, it is time to replace the marker. Cap marker tightly to avoid drying out.

**PRO TIPS**

Set Magic Marker Eyeliner with Eye Colour to increase wear. Bright colors will pop against the black and create vibrant shades of eyeliner.

**KEY INGREDIENTS**

**Comfortable Application:** Glycerin

**Instant color release, Intensity:** Carbon Black

**Long-wearing:** High percentage of water

**High Gloss Finish:** Polyester Polymer provides excellent hold under high-humidity conditions

**Soothing:** Organic Chamomile (Matricaria) Flower Water

**CLAIMS**

Paraben-free, D4 & D5 free, Gluten-free

**INGREDIENTS**

Water (Aqua), Glycerin, Polyester-5, Butylene Glycol, Sodium Lignosulfonate, Dipropylene Glycol, Sodium Laureth-11 Carboxylate, Chamomilla Recutita (Matricaria) Flower Water [Chamomilla Recutita Water], Phenoxyethanol, Potassium Sorbate, Polysorbate 80, Sodium Dehydroacetate, Sodium Benzoate. MAY CONTAIN: Black 2 (CI 77266)

# LASH DEFINITION PRIMER



**LASH DEFINITION** unique formulation contains non-irritating fibers that adhere to lashes to help provide a perfect base for beautiful lashes. Works well with Lash Essential Mascara.

**SKIN TYPES**

Ideal for all skin types

**APPLICATION**

Apply after curling the lashes. Work with lashes to achieve desired shape and thickness. Allow to dry completely. Just blacken lashes by touching lightly with Lash Essential Mascara. Do not reshape lashes with mascara following application.

**PRO TIPS**

Comb through the lashes quickly so that Lash Definition Primer does not dry in mid application. Apply from base to tip lash making sure to cover top and bottom of upper lashes and layer to add more volume. Have client look up to the ceiling while applying product to lower lashes. Make sure product is completely dry before applying Lash Essential Mascara.

**KEY INGREDIENTS**

**Easy Application:** Beeswax

**Lash Lengthening:** Nylon fibers

**Conditioning:** Oryza Sativa (Rice) Bran Wax, Copernicia Cerifera (Carnauba) Wax  
B5 Pro Vitamin: Panthenol

**CLAIMS**

FD&C/D&C Dye-free, Gluten-free, D4 and D5 free

**INGREDIENTS**

Water, Oryza Sativa (Rice) Bran Wax, Sucrose Stearate, Synthetic Beeswax, Copernicia Cerifera (Carnauba) Wax, (Cera Carnauba), Cetearyl Alcohol, Peg-120 Methyl Glucose Dioleate, Polybutene Hydroxyethylcellulose, Nylon-66, Panthenol, Methylparaben, Propylparaben, Chlorphenesin, Titanium Dioxide (CI 77891).

# LASH ESSENTIAL MASCARA



**LASH ESSENTIAL** innovative gel mascara volumizes and accentuates each individual lash without clumping. Apply in layers to build fabulous lashes. For longer, bolder lashes apply over Lash Definition. Available in Black.

- SKIN TYPES**  
Ideal for all skin types. Great for sensitive eyes.
- APPLICATION**  
Curl lashes, apply Lash Definition or use alone. Sweep Lash Essential Mascara from base to tip of lash working from top and bottom of lashes.
- PRO TIPS**  
When applying mascara on a client, have client focus on an area other than the mascara wand. Instruct your client to focus on your opposite hand that is out stretched before her. If you need her to lower her gaze, move her eye to the right or left, move your hand accordingly. Roll mascara wand above and below upper lashes for complete lash coverage. For volume, apply at least two coats of Lash Essential Mascara. After each application of mascara, comb through the lashes for added length. Use with a heated eyelash curler for extra layering.
- KEY INGREDIENTS**  
**Antioxidants:** Vitamin A, Vitamin C, Vitamin E  
**Humectant:** Glycerin
- CLAIMS**  
Paraben-free, FD&C/D&C Dye-free, Gluten-free, D4 and D5 free
- INGREDIENTS**  
Water, Beeswax (Cera Alba), PVP, Pentylene Glycol, Glycerin, Stearic Acid, Copernicia Cerifera (Carnauba) Wax (Cera Carnauba), Glyceryl Stearate, Peg-100 Stearate, Nylon-12, Cetyl Alcohol, Triethanolamine, Phenoxyethanol, Panthenol, Vp/eicosene Copolymer, Magnesium Aluminum Silicate, Caprylyl Glycol, Retinyl Palmitate, Tocopheryl Acetate, Ascorbyl Palmitate, Sorbic Acid, Iron Oxides (CI77499)

# LASH LUXE



**LASH LUXE** all-in-one mascara adds volume, length and curl to lashes without clumping. Richly black formula includes Widelash™, clinically proven to strengthen lashes in just 15 days of use.

- SKIN TYPES**  
Ideal for all skin types
- APPLICATION**  
Curl lashes, then apply. Sweep Lash Luxe mascara from base to tip of lash working from top and bottom of lashes.
- KEY INGREDIENTS**  
**Lash Strengthening:** Pathenol (Vitamin B5), Widelash™  
**Antioxidant:** Vitamin C
- INGREDIENTS**  
Aqua (Water), Cera Alba (Beeswax), Cyclopentasiloxane, Copernicia Cerifera (Carnauba) Wax, Alcohol Denat., Palmitic Acid, Nylon-12, VP/Eicosene Copolymer, Stearic Acid, Triethanolamine, Acacia Senegal Gum, Glycerin, Polybutene, Phenoxyethanol, Polyvinyl Alcohol, VP/VA Copolymer, Aminomethyl Propanediol, Panthenol, Propylene Glycol, Polyquaternium-10, Ascorbyl Palmitate, Ethylhexylglycerin, Biotinoyl Tripeptide – 1  
MAY CONTAIN: Iron Oxide (CI 77499)



# SIMPLY REMOVE



**SIMPLY REMOVE** antiaging, skin smoothing eye makeup remover formula containing antioxidants and natural ingredients that do more than remove makeup – they assist in “skin repair”.

Packaged in easy-to-use pump bottle. No leaking during travel.

**SKIN TYPES**  
Ideal for all skin types. Also safe for use with contact lenses.

**APPLICATION**  
Moisten cotton pad with Simply Remove. Hold gently over eye lashes for a few seconds, allowing mascara to dissolve. Wipe eye clean.

**PRO TIPS**  
Use with a q-tip to clean up makeup application. Simply Remove is oil-free so you can immediately reapply makeup. Does not remove waterproof mascara.

**KEY INGREDIENTS**  
**Antioxidants:** Vitamin E  
**Cleansing Effect:** Orange Extract  
**Humectants:** Glycerin  
**Skin Repair:** Beta Glucan (Plerasan®)

**CLAIMS**  
Oil-free, Alcohol-free, Paraben-free, Chemical-free, Gluten-free, D4 and D5 free

**INGREDIENTS**  
DI Water, Decyl Oleate, Ethylhexyl Palmitate, Glycerine, Polyacrylate 13, Dicaprylyl Ether, Cetearyl Isononanoate, Polyisobutene, Neopentyl Glycol Dicaprylate/Dicaprate, Glyceryl Stearate Citrate, Sucrose Stearate, Sodium Lauroyl Sarcosinate, Beta Glucan (PleraSAN®), Acrylates/C10-30 Alkyl Acrylate Crosspolymer, Polysorbate 20, L-Arginine, Tocopherol, Xanthan Gum, Fragrance, Phenoxyethanol, Potassium Sorbate, Citric Acid, Orange Extract, EDTA

# VELVET LIP PENCIL



**VELVET LIP PENCIL** creamy, moisturizing lip pencils with fluid-like texture glide on creating a flawless satin finish of intense, long-wearing color. Includes raspberry extract, Berry Flux Vita, to preserve lip suppleness, elasticity and tone.

**SKIN TYPES**  
Ideal for all skin types

**APPLICATION**  
No need for a lip brush! Color glides on more saturated directly from the pencil. Fine point is user-friendly for controlled application. Sharpen between clients. New dual sharpener works for both pencil sizes. Cap pencil tightly to keep formula fresh and fluid.

**PRO TIPS**  
Do not layer this product with lip gloss. Increase color and moisture by adding another layer of Velvet Lip Pencil. Lip gloss will break down the long-wear application and cause bleeding.

**KEY INGREDIENTS**  
**Moisturizing:** Berry Flux Vita (Raspberry Cultured Stem Cells), Pomegranate Extract  
**Antioxidant:** Pomegranate Extract, Vitamin C, and Vitamin E

**CLAIMS**  
Paraben-free, Gluten-free, Talc-free, D5-free

**LOVE, SWEET, RED, WANTED, VICE INGREDIENTS**  
Dimethicone, Octyldodecanol, Phenyl Trimethicone, Polyethylene, Trimethylsiloxysilicate, Ceretyl Dimethicone, Dipentaerythrityl Hexahydroxystearate, C30-45 Alkyl Dimethicone, HDI/Trimethylol Hexyllactone Crosspolymer, Polymethylsilsesquioxane, Disteardimonium Hectorite, Punica Granatum Sterols, Alcohol, Flavor (Aroma), Ethyl Vanillin, Caprylic/Capric Triglyceride, Lecithin, Water (Aqua), Tocopherol, Ascorbyl Palmitate, Citric Acid, Rubus Idaeus Leaf Cell Culture

**ROSE, BLUSH, POP INGREDIENTS**  
Dimethicone, Octyldodecanol, Phenyl Trimethicone, Polyethylene, Trimethylsiloxysilicate, Ceretyl Dimethicone, Dipentaerythrityl Hexahydroxystearate, C30-45 Alkyl Dimethicone, HDI/Trimethylol Hexyllactone Crosspolymer, Polymethylsilsesquioxane, Disteardimonium Hectorite, Punica Granatum Sterols, Alcohol, Flavor (Aroma), Ethyl Vanillin, Caprylic/Capric Triglyceride, Lecithin, Water (Aqua), Tin Oxide, Tocopherol, Ascorbyl Palmitate, Citric Acid, Rubus Idaeus Leaf Cell Culture. FOR POP: Calcium Aluminum Borosilicate is found after Dipentaerythrityl Hexahydroxystearate.

MAY CONTAIN (PEUT CONTENIR): Mica, Iron Oxides (CI 77499, CI 77492, CI 77491), Yellow 6 Lake (CI 15985), Blue 1 Lake (CI 42090), Manganese Violet (CI 77742), Yellow 5 Lake (CI 19140), Yellow 10 Lake (CI 47005), Red 7 Lake (CI 15850), Red 28 Lake (CI 45410), Red 6 (CI 15850), Red 22 Lake (CI 45380), Carmine (CI 75470), Titanium Dioxide (CI 77891), Bismuth Oxychloride (CI 77163)



COLOUR VINYL LIPSTICK



**COLOUR VINYL LIPSTICK** full coverage lipstick meets patent-pending Super Shine Technology for a luminous pout. Exclusive gel formula glides on with a rich feel and pure shine that lasts 10 hrs. Colour sets for hours with a finish that stays moist and elastic over time, maintaining that just applied look and feel. Colour Vinyl Lipstick is highly moisturizing, smoothing and nourishing. New, breakthrough smaller bullet is designed to conform to the lip preventing smudging, feathering and over-application.

SKIN TYPES

Ideal for all skin types

KEY INGREDIENTS

**Moisturizing:** Berry Flux Vita (Raspberry cultured stem cells)

**Antioxidant:** Litchi Chinensis Fruit Extract

**Smoothing:** Argan Oil

**Skin Conditioning:** Olea Europaea (Olive) Fruit Extract, Carthamus Tinctorius (Safflower) Seed Oil

**One-stroke Color Release:** high % of pure pigment

CLAIMS

Fragrance-free, Paraben-free, Gluten-free. D5-free

INGREDIENTS

Octyldodecanol, Diisostearyl Malate, Synthetic Wax, Trimethylolpropane Triisostearate, Polyurethane-42, Isododecane, Isohexadecane, Polyglyceryl-2 Isostearate/ Dimer Dilinoleate Copolymer, Hexyldecanol, Dicalcium Phosphate, Hydroxypropylcellulose Stearyl Carbamate, Hydrogenated Styrene/Methyl Styrene/Indene Copolymer, Mica, Pentaerythrityl Tetra-DI-t-Butyl Hydroxyhydrocinnamate, Argania Spinosa Kernel Oil, Glycerin, Carthamus Tinctorius (Safflower) Seed Oil, Litchi Chinensis Fruit Extract, Water (Aqua), Acacia Senegal Gum, Olea Europaea (Olive) Fruit Extract, Tin Oxide MAY CONTAIN (PEUT CONTENIR): Titanium Dioxide (CI 77891), Iron Oxides (CI 77491, CI 77492, CI 77499), Red 6 (CI 15850), Red 7 (CI 15850), Red 7 Lake (CI 15850), Blue 1 Lake (CI 42090), Yellow 5 Lake (CI 19140), Yellow 6 Lake (CI 15985), Red 28 Lake (CI 45410), Red 30 Lake (CI 73360)

COLOUR LUXE



**COLOUR LUXE** oil-rich, intense hydration creates a luminous shine for youthful looking lips. Luxurious formula nourishes lips with deep conditioning oils, vitamins and antioxidants. Patented antiaging peptide restores lip tissue, boosts collagen and increases volume.

Available in 12 shades

SKIN TYPES

Ideal for all skin types

BENEFITS

Colour Luxe features a unique film-former that makes gloss long-wearing and transfer resistant. A patented antiaging peptide restores lip tissue, boosts collagen, keeps lips moisturized and increases volume. This formula is packed with good-for-you antioxidants such as Vitamins C and E along with Pomegranate Extract. Monoi de Tahiti is a rich, emollient oil that penetrates skin quickly and acts as a natural barrier against dehydration. Jojoba Oil leaves lips smooth and conditioned.

APPLICATION

Custom applicator was designed to combine the benefits of a brush and flocked sponge. The flexible tip allows for the precise painting of a brush while the flocked applicator controls product application. Can also be applied with the Lip Brush.

KEY INGREDIENTS

**Antioxidants:** Vitamins C & E, and Pomegranate Extract

**Long-Lasting:** Polybutene, Hydrogenated Polydecene and VP/Hexadecene Copolymer

**Hydrating:** Monoi de Tahiti

**Conditioning:** Jojoba Oil

CLAIMS

Talc-free, Paraben-free, D4 & D5 free, Gluten-free, Propylene Glycol-free, Lanolin Oil-free

GOSSAMER, GLOSSED, SLEEK, POLISH INGREDIENTS

Polybutene, Pentaerythrityl Tetraisostearate, Polyglyceryl-2 Triisostearate, Octyldodecanol, Punica Granatum Sterols, Polyethylene, Isostearyl Isostearate, Hydrogenated Polydecene, Fragrance (Parfum), Dimethicone, VP/ Hexadecene Copolymer, Silica Dimethyl Silylate, Silica, Trimethylsiloxysilicate, Simmondsia Chinensis (Jojoba) Seed Oil, Tocopheryl Acetate, Cocos Nucifera (Coconut) Oil, Ethylhexyl Palmitate, Tribehenin, Ascorbyl Palmitate, Sorbitan Isostearate, Gardenia Tahitensis Flower Extract, Tocopherol, Palmitoyl Tripeptide-1, Mica (CI 77019), Titanium Dioxide (CI 77891) MAY CONTAIN: Iron Oxides (CI 77492, CI 77499, CI 77491), Red 7 Lake (CI 15850), Red 6 (CI 15850), Yellow 5 Lake (CI 19140), Carmine (CI 75470), Blue 1 Lake (CI 42090)

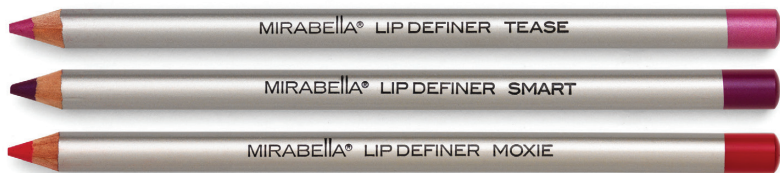
LUSTRE, LUMINOSITY INGREDIENTS

Polybutene, Isopropyl Palmitate, Triisostearyl Citrate, Calcium Sodium Borosilicate, Quaternium-90 Sepiolite, Euphorbia Cerifera (Candelilla) Wax (Candelilla Cera), Glyceryl Stearate, Fragrance (Parfum), Polyglyceryl-3 Diisostearate, Quaternium-90 Montmorillonite, Tocopheryl Acetate, Pentaerythrityl Tetra-DI-T-Butyl Hydroxyhydrocinnamate, Simmondsia Chinensis (Jojoba) Seed Oil, Calcium Aluminum Borosilicate, Ethylhexyl Palmitate, Benzotriazolyl Dodecyl P-Cresol, Silica, Tribehenin, Ascorbyl Palmitate, Sorbitan Isostearate, Gardenia Tahitensis Flower Extract, Tin Oxide, Tocopherol, Palmitoyl Tripeptide-1, Mica (CI 77019), Titanium Dioxide (CI 77891), Carmine (CI 75470) MAY CONTAIN: Bismuth Oxychloride (CI 77163), Iron Oxides (CI 77491, CI 77499)

BEAM, BLAZE, FLICKER, FLARE, WINK INGREDIENTS

Polybutene, Pentaerythrityl Tetraisostearate, Polyglyceryl-2 Triisostearate, Octyldodecanol, Punica Granatum Sterols, Polyethylene, Isostearyl Isostearate, Hydrogenated Polydecene, Calcium Sodium Borosilicate, Fragrance (Parfum), Dimethicone, VP/Hexadecene Copolymer, Silica, Silica Dimethyl Silylate, Trimethylsiloxysilicate, Calcium Aluminum Borosilicate, Tocopheryl Acetate, Simmondsia Chinensis (Jojoba) Seed Oil, Cocos Nucifera (Coconut) Oil, Silicon Dioxide, Ethylhexyl Palmitate, Tribehenin, Ascorbyl Palmitate, Sorbitan Isostearate, Tin Oxide, Gardenia Tahitensis Flower Extract, Alumina, Tocopherol, Palmitoyl Tripeptide-1, Mica (CI 77019), Titanium Dioxide (CI 77891) MAY CONTAIN: Iron Oxides (CI 77492, CI 77499, CI 77491), Red 7 Lake (CI 15850), Red 6 (CI 15850), Yellow 5 Lake (CI 19140), Carmine (CI 75470), Blue 1 Lake (CI 42090)

# LIP DEFINER



**LIP DEFINER** precise, lip lining pencil with amazing texture. Formulated to glide on effortlessly for the most natural lip line. May be worn alone or paired with other lip products. Available in 5 shades designed to complement Colour Vinyl Lipstick.

**SKIN TYPES**

Ideal for all skin types

**APPLICATION**

Best if sharpened prior to use. Carefully outline the lip to desired shape. To avoid harsh edges, blend with Lip Brush.

**PRO TIPS**

You can enhance or slightly alter a lip shape by using a pencil that is close to the natural color of the lip. Line just inside or outside the vermillion border to make sure lips look larger or smaller. Lip liner greatly increases the durability of lipstick. The more liner applied, the longer the lipstick will stay. Lip Definer can be worn to define the lip along the vermillion border or used to fill in the lip for long lasting application with gloss over top. After sharpening pencil, slightly round off tip prior to application.

**KEY INGREDIENTS**

**Conditioning:** Beeswax

**Antioxidants:** Vitamin C, Vitamin E

**CLAIMS**

Paraben-free, Lead-free, Gluten-free, D4 and D5 free

**INGREDIENTS**

Triethylhexanoin, Hydrogenated Polyisobutene, Hydrogenated Coco-Glycerides, Copernicia Cerifera (Carnauba) Wax (Copernicia Cerifera), Beeswax (Cera Alba), Ozokerite, Dipentaerythrityl Tetrahydroxystearate/Tetraisostearate, Boron Nitride, Tocopheryl Acetate, Lecithin, Tocopherol, Ascorbyl Palmitate, Citric Acid.  
MAY CONTAIN: Mica, Orange 5 Lake (CI 45370), Yellow 6 Lake (CI 15985), Red 21 Lake (CI 45380), Titanium Dioxide (CI77891), Red 27 Lake (CI 45410), Manganese Violet (CI 77742), Yellow 5 Lake (CI 19140), Bismuth Oxychloride (CI 77163), Yellow 10 Lake (CI 47005), Red 28 Lake (CI 45410), Red 22 Lake (CI 45380), Blue 1 Lake (CI 42090), Carmine (CI 75470), Red 30 Lake (CI 73360), Iron Oxides (CI 77491, 77492, 77499), Red 7 Lake (CI 15850), Red 6 Lake (CI 15850), Red 6 (CI 15850)

# PERFECTING LIP DEFINER



**PERFECTING LIP DEFINER** clear lip liner creates a protective barrier so lip products stay put. Also reduces the appearance of fine lines and wrinkles around the lips. Perfecting Lip Definer seals lipstick in place and prevents feathering. Wear red lipstick without fear!

**SKIN TYPES**

Ideal for all skin types

**APPLICATION**

Best if sharpened prior to use. Perfecting Lip Definer applies clear, so use with your favorite Mirabella lipsticks and glosses without changing the shade.

**PRO TIPS**

Line just inside or outside the vermillion border to prevent lipstick and gloss from bleeding. Fill in the lip for long lasting application of lipstick or lip gloss. After sharpening pencil, slightly round off tip prior to application.

**KEY INGREDIENTS**

**Antioxidants:** Vitamin C, Vitamin E

**CLAIMS**

Paraben-free, FD&C/D&C Dye-free, Lead-free, Gluten-free, D4 and D5 free

**INGREDIENTS**

Hydrogenated Polyisobutene, Synthetic Wax, Polyethylene, Ozokerite, Ethylhexyl Palmitate, Cetyl Dimethicone/Dimethicone Crosspolymer, Polybutene, Polymethylsilsesquioxane, Lauroyl Lysine, Boron Nitride, Disteardimonium Hectorite, Propylene Carbonate, Dipalmitoyl Hydroxypropylene, Lecithin, Tocopherol, Ascorbyl Palmitate, Citric Acid

# SIGNATURE BRUSH COLLECTION



## SIGNATURE BRUSH COLLECTION

Mirabella hand-sculpted brushes are made with the finest quality materials and feature exclusive brushed aluminum ferrules and handles.

### POWDER

Luxurious full powder brush made of ZGF goat hair softly and quickly provides a flawless application of powder for face and body.

### FACE BLENDER

Large circular face blender brush provides lightweight application of product. All-purpose synthetic blended hair works well with cream and powder foundation, blush, and bronzer.

### BLUSH/CONTOUR

Full luxurious BJF goat hair blush brush diffuses color for natural contouring and sculpting of cheeks.

### FOUNDATION

Synthetic wide foundation brush minimizes product waste and provides hygienic application.

### LIP

Covered sable lip brush is elegantly tapered for precise application of lip products. Cover makes this brush convenient for mess-free travel.

### EYE BLENDER

Fluffy eye blender brush made of BJG goat hair fuses eyeshadow to create a naturally sculpted eye. Tapered domed shape provides flawless and easy application.

Mirabella recommends brushes be thoroughly washed at the end of each day for sanitation. For quick cleansing between clients, we recommend Beauty So Clean products that can be found at [www.beautysoclean.com](http://www.beautysoclean.com).

### GROOMING

Durable boar bristle eyebrow grooming tool is designed to comb and sculpt.

### PERFECTING CONCEALER

Perfectly-shaped concealer brush allows for precise camouflage work. Synthetic hair is excellent for application of cream and liquid products.

### EYESHADOW

Pony eye shadow brush provides a beautiful wash of color. Small shape is versatile for shading and blending.

### SMALL CREASE

Soft pony contouring brush makes shadow application effortless. Special domed shape contours and leaves no harsh edges.

### FLAT EYESHADOW

French style flat pony eyeshadow brush lays down color quickly and evenly. Unique tapered design eliminates powder fall out and can be used for many different application techniques.

### DETAIL

Small brush cut to the ideal taper for any detail work. A mix of pony and synthetic hair creates a firm tip perfect for shadow lining and precise application.

### ANGLE/BROW

Precise sable angle brow brush is designed to expertly shape and define natural-looking brows.

### KABUKI

Domed kabuki brush made of BJF goat hair picks up just the right amount of product for flawless powder application. This best-selling brush is compact enough to tuck into a purse or makeup bag making it ideal for touch-ups on the go. Pairs perfectly with Pure Press mineral powder foundation.



TRUE TO YOU.  
NO IMITATIONS.  
BEAUTY IS A LIFESTYLE.

# MIRABELLA®